



NLD-1401

Article-No.: 93161

1/3" Network Dome, Fixed,
Day&Night, 704 x 576, ONVIF,
H.264, MPEG4, PoE, 12/24V

Mainfeatures

1/3" Sony Super HAD CCD
Powerful digital noise reduction (3D-DNR)
ONVIF conformance
Integrated web server: 10Base-T/100Base-TX
Resolutions: 4CIF, VGA, QVGA, 2CIF, CIF, SIF, QCIF
Varifocal lens F1.4/2.8-12mm w. DC controlled Iris

Removal IR cut filter (ICR)
Privacy masking/Mirror function/Motion detection
Triple codec: H.264 / MPEG-4 / MJPEG
Supports up to 25fps. (at 4CIF)
16 channel video client software
Vandal resistant dome housing

Specifications

Series	eneo NL
Resolution standard	SD
System	True Day&Night
Sensor size	1/3"
Imager	CCD
Imager	Sony Super HAD Interline Transfer
Sensitivity	0,35 Lux
Sensitivity	(colour), 0.2Lux (B&W) at F1.2 (measured)
Manual electronic shutter (MES)	1/50 ~ 1/100,000sec.
Digital Noise Reduction (DNR)	yes
Digital Noise Reduction (DNR)	3D-DNR
Low speed shutter	yes
Low speed shutter	Automatic, 2 ~ 256 Fps., ON/OFF switchable
White balance	AWB, Indoor / Outdoor switchable
Backlight compensation	BLC





Specifications (continued)

Backlight compensation	HSBLC (Highlight Suppress Back Light Compensation), ON/OFF switchable. Adjustable size and gain
Wide Dynamic Range (WDR)	D-WDR
IR cut filter	switchable
Mirror function	H/V flip, 180° rotation
Resolution max.	704x576
Resolution	704x576 (4:3), 640x480 (4:3), 320x240 (4:3), 704x288 (4:3), 352x288 (4:3), 176x144 (4:3), 160x120 (4:3)
Image transmission rate max.	25 fps
Privacy zones masking	ON/OFF switchable
Activity detection	yes
Motion detector	9 zones, ON/OFF switchable
Text display	15 character label, ON/OFF switchable
Sharpness correction	adjustment range: 0 ~ 31
Brightness	adjustment range: 0 ~ 100
Menu languages	English, Korean, Chinese
OSD function control	H/V flip (mirror picture), positive/negative, freeze, day&night, shutter control, sharpness correction, brightness, exposure, white balance, privacy zones, MOD, text, digital cropping
External connections	video (BNC), audio input/output, alarm input/output, voltage input, RJ-45
Video outputs	composite (CVBS)
Audio support	yes
Audio	1/1 Line input and output (Input selectable with microphone pre-amplifier)
Alarm inputs	1
Alarm outputs	1
Internal storage	no
Compression standard	H.264, M-JPEG, MPEG-4
Bandwidth	controllable bandwidth and frame rate
Stream types	H.264, MPEG-4, MJPEG multiple (3 Streams)
Ethernet interface	10Base-T, 100Base-TX
Web browser	MS Internet Explorer vers. 7.0 or higher, Google Chrome (Java), Mozilla Firefox (Java), Safari (Java)
Network protocols	IPv4, IPv6, SMTP, DDNS, HTTP, HTTPS, DNS, FTP, DHCP, UPnP, NTP, RTSP, RTP, TCP, UDP, SNMP, RTCP, ARP
Lens type	varifocal
Focal length	2,8 mm - 12 mm
Horizontal angle of view	81,2° - 22,6°
Digital zoom	2x ~ 32x
Iris control	DC
MOD (Minimum object distance)	0,5 m
Illumination	no
Illumination	not implemented
Remote configuration	web browser, remote software
Firmware update	via remote software
Password protection	yes
e-PTZ support	no





Specifications (continued)

Rotation range	359°
Supply voltage	12VDC, 24VAC, PoE
Power consumption	6.5W
Mounting	wall mount, ceiling mount
Temperature range (operation)	-10°C ~ +50°C
Vandalism resistant	yes
Housing	outdoor
Housing material	aluminium
Colour (housing)	Pantone Cool Gray 1C
Colour (bubble)	clear
Protection rating	IP66
Management Software Support	www.eneo-security.com/software
SDK	available, SDK incl. HTTP-API and ActiveX
ONVIF	yes, ONVIF Test Tool Version 1.02.4
Certificates	CE
Dimensions (HxWxD)	see drawing
Weight	950g
Parts supplied	Mounting kit, Torx wrench key, Terminal plugs (2 & 6 pins), Drilling template, Manual

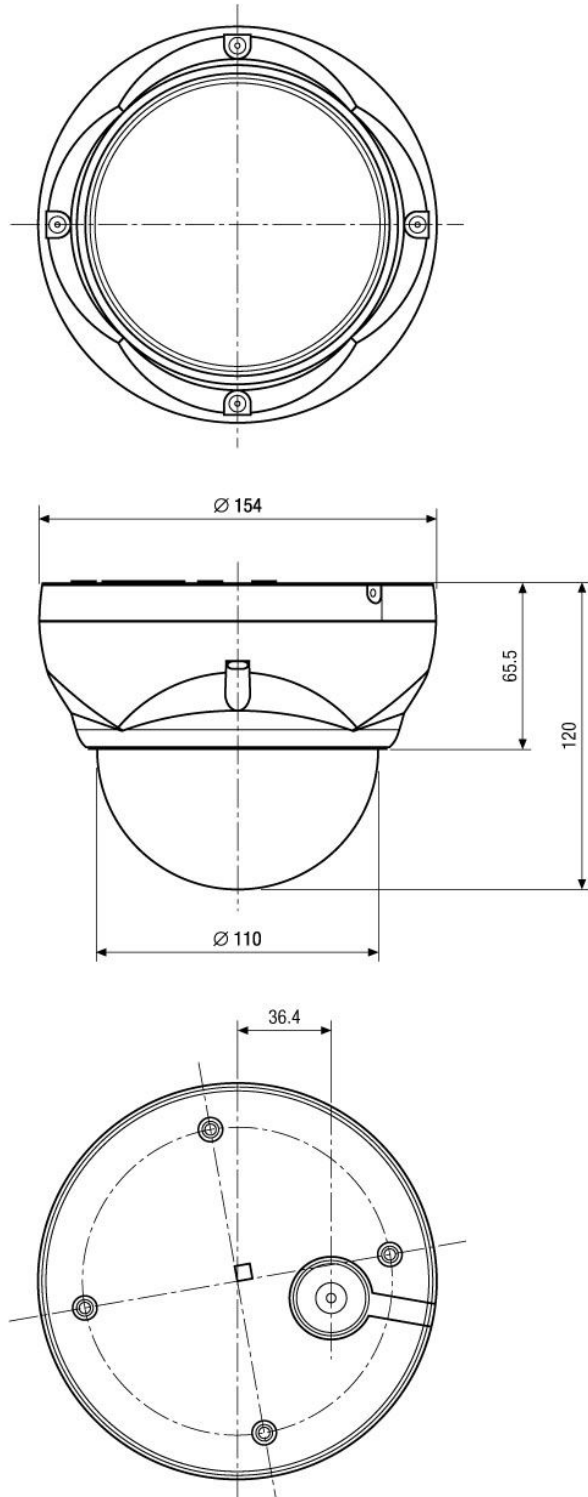
Optional Accessories

Image	Article ID / type	Description
	DOME-WB2	Wall Bracket, for eneo NLD, NXD, EDMC-3221 Dome Series
	EDMC/H24	Low Voltage Heater Kit 24V/10W for EDMC- 142, VKCD -1410, NLDxx, NXDxx
	EDMC/H12	Low Voltage Heater Kit 12V/10W for Minitrax Series, NLD-xx, NXD-xx
	VT-PS12DC-11	Plug-in Power Supply Unit, 100-240VAC/12VDC (1.0A), Regulated, with DC Plug

Optional Accessories (continued)

Image	Article ID / type	Description
	PNR-5216	Network Video Recorder, 16xIP, 1920x1080, 480fps, 1TB, H.264, MPEG-4, M-JPEG, DVI, D-Sub
	PNR-5116	Network Video Recorder, 16xIP, 1920x1080, 320fps, 1TB, H.264, MPEG-4, M-JPEG
	PNR-5108	Network Video Recorder, 8xIP, 1920x1080, 200fps, 1TB, H.264, MPEG-4, M-JPEG
	PNR-5104	Network Video Recorder, 4xIP, 1920x1080, 120fps, 1TB, H.264, MPEG-4, M-JPEG

Technical Drawing



Maße/Dimensions: mm



Your partner for eneo products:

