



VTL-300/WW-POE

Article number: 79706

Weatherproof Housing, 300mm, Wall Bracket, Heater, 12V, High PoE, IP66

Mainfeatures

Network camera weather protection

Integrated PoE splitter (12VDC/1.75A resilient)

Insulated camera mounting

Integrated wall bracket

Thermostatically controlled window heater

Colour: RAL9002

Humidity protected cable feed-through

Fold-down housing body

Housing body length: 300mm

Cable entry through the wall bracket

Protection rating: IP66

Accessory: High PoE injector

Specifications

Series	eneo VTL
Dimensions (HxWxD)	see drawing
Clear Shield	no
Colour (housing)	RAL9002
Housing	outdoor
Housing size	small
Housing material	metal (aluminium)
Maximum installation length	240 mm
Weight	4.0kg
Heater	yes
Integrated wall mount	yes
Blower	no

VTL-300/WW-POE

Specifications continued

Power over Ethernet	Built-in HiPoE Splitter with internal wiring
Window heater	yes
Protection rating	IP66
Hidden cable management	yes
Sunshield	yes
Supply voltage	PoE
Wiper	no
Certificates	CE
Remarks	The specified temperature range refers to the housing only. The usable temperature range for the entire combination, indoors and outdoors, depends strongly on the expected ambient temperature and the type of camera used.
Categorie	Housings

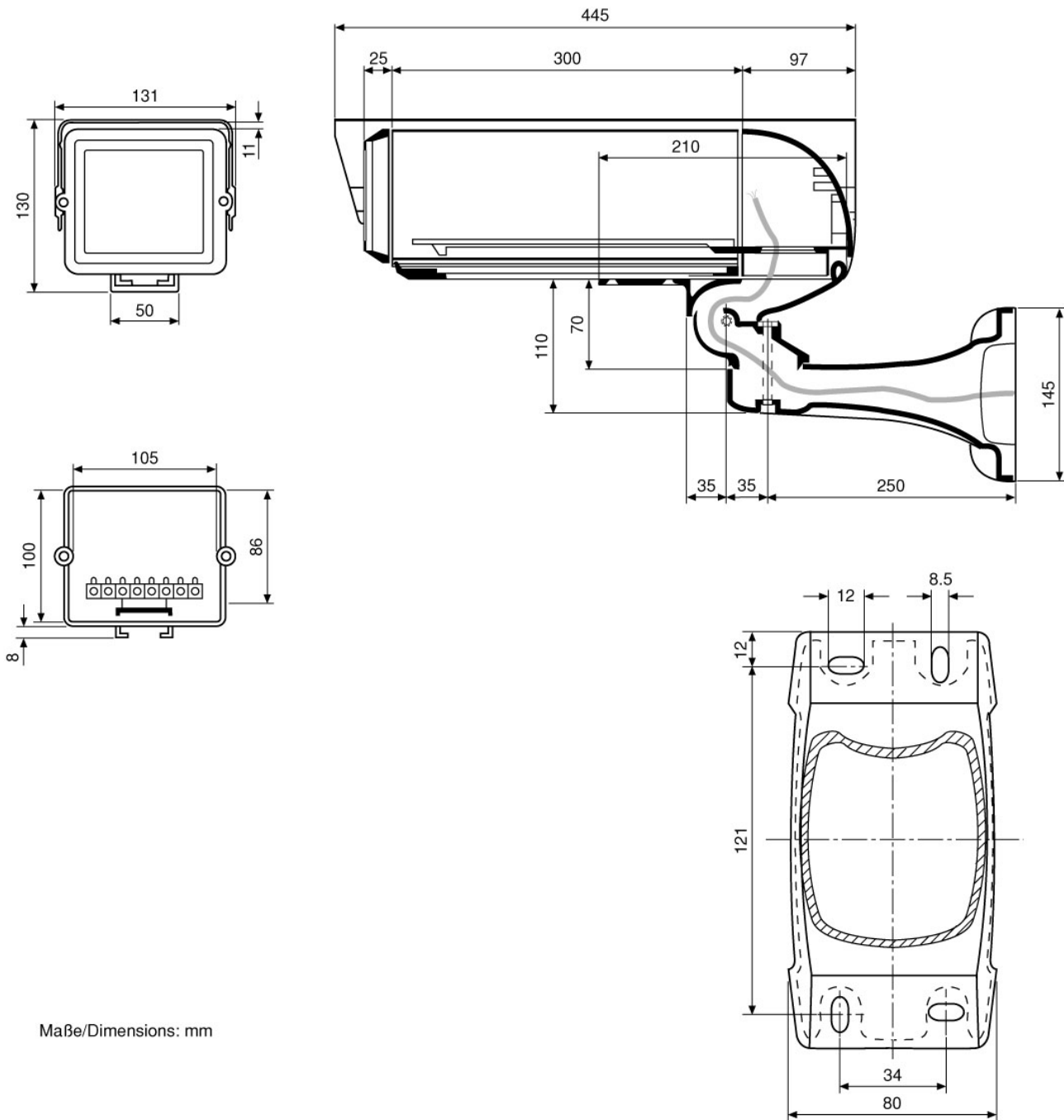
VTL-300/WW-POE

Available Accessories

Bild	Art. Nr. / Bezeichnung	Beschreibung
	73173 / MK-5-W	Pole Mount Bracket & Swivel Head for Weatherproof Housings, RAL9002
	73176 / DH-5-W	Ceiling Bracket with adjustable Housing Mount Angle, RAL9016
	79592 / PM-6S	Pole Mount Adapter for 1 Wall Mount, (50-140mm Pole), RAL9002
	79593 / PM-6D	Pole Mount Adapter for 2 Wall Mounts, (50-140mm Pole), RAL9002
	79613 / CMA-2	Corner Mount Adapter for Wall Brackets WD-5, WD-7, VTL-WW, VHK-WW, RAL9002

VTL-300/WW-POE

Technical Drawing



Maße/Dimensions: mm

Your Contact Person



eneo is a registered trademark of
VIDEOR E. Hartig GmbH
Carl-Zeiss-Straße 8
63322 Rödermark
Deutschland
Tel.: +49 6074-888-333
E-Mail: info@eneo-security.com
Web: www.eneo-security.com