



VTL-WWA

Article number: 79488

Weatherproof Housing (300mm) with Heater
Thermostat, Wallbracket, RAL9002, 230V

Mainfeatures

Weather protection for cameras

Fold-down housing body

Housing body length: 300mm

230V window heater included

Housing colour: RAL9002

Integrated wall bracket

Insulated camera mounting

Cable entry through the wall bracket

Protection rating: IP66

Specifications

Series	eneo VTL
Dimensions (HxWxD)	see drawing
Clear Shield	no
Colour (housing)	RAL9002
Housing	outdoor
Housing size	small
Housing material	metal (aluminium)
Maximum installation length	300 mm
Weight	4.0kg
Heater	no
Integrated wall mount	yes
Blower	optional
Window heater	yes
Protection rating	IP66









VTL-WWA

Specifications continued

Hidden cable management	yes
Sunshield	yes
Supply voltage	100~240VAC
Wiper	no

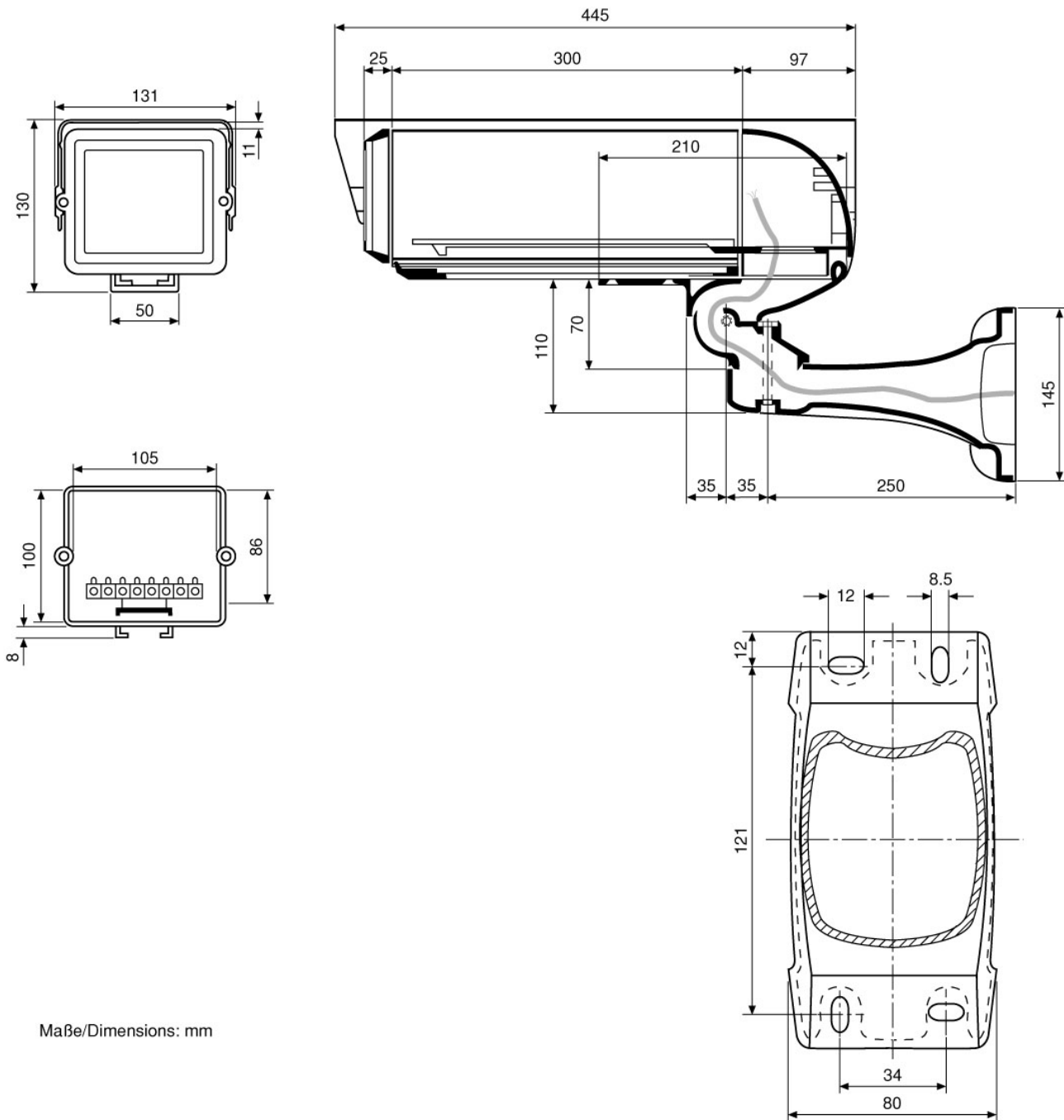
VTL-WWA

Available Accessories

Bild	Art. Nr. / Bezeichnung	Beschreibung
	70457 / AK-3	Camera Connection box, 230V Input, 24V-3.2A, 12V-1A Outputs
	73173 / MK-5-W	Pole Mount Bracket & Swivel Head for Weatherproof Housings, RAL9002
	73176 / DH-5-W	Ceiling Bracket with adjustable Housing Mount Angle, RAL9016
	77345 / VTL-BL-230V	Blower, with Thermostat 230V, for VTL-WWA housing
	79592 / PM-6S	Pole Mount Adapter for 1 Wall Mount, (50-140mm Pole), RAL9002
	79593 / PM-6D	Pole Mount Adapter for 2 Wall Mounts, (50-140mm Pole), RAL9002
	79613 / CMA-2	Corner Mount Adapter for Wall Brackets WD-5, WD-7, VTL-WW, VHK-WW, RAL9002
	79662 / NE-130/12V	Power Supply Unit 230V/12VDC-1.5A for Housings VTL-WWA

VTL-WWA

Technical Drawing



Maße/Dimensions: mm

Your Contact Person



eneo is a registered trademark of
VIDEOR E. Hartig GmbH
Carl-Zeiss-Straße 8
63322 Rödermark
Deutschland
Tel.: +49 6074-888-333
E-Mail: info@eneo-security.com
Web: www.eneo-security.com